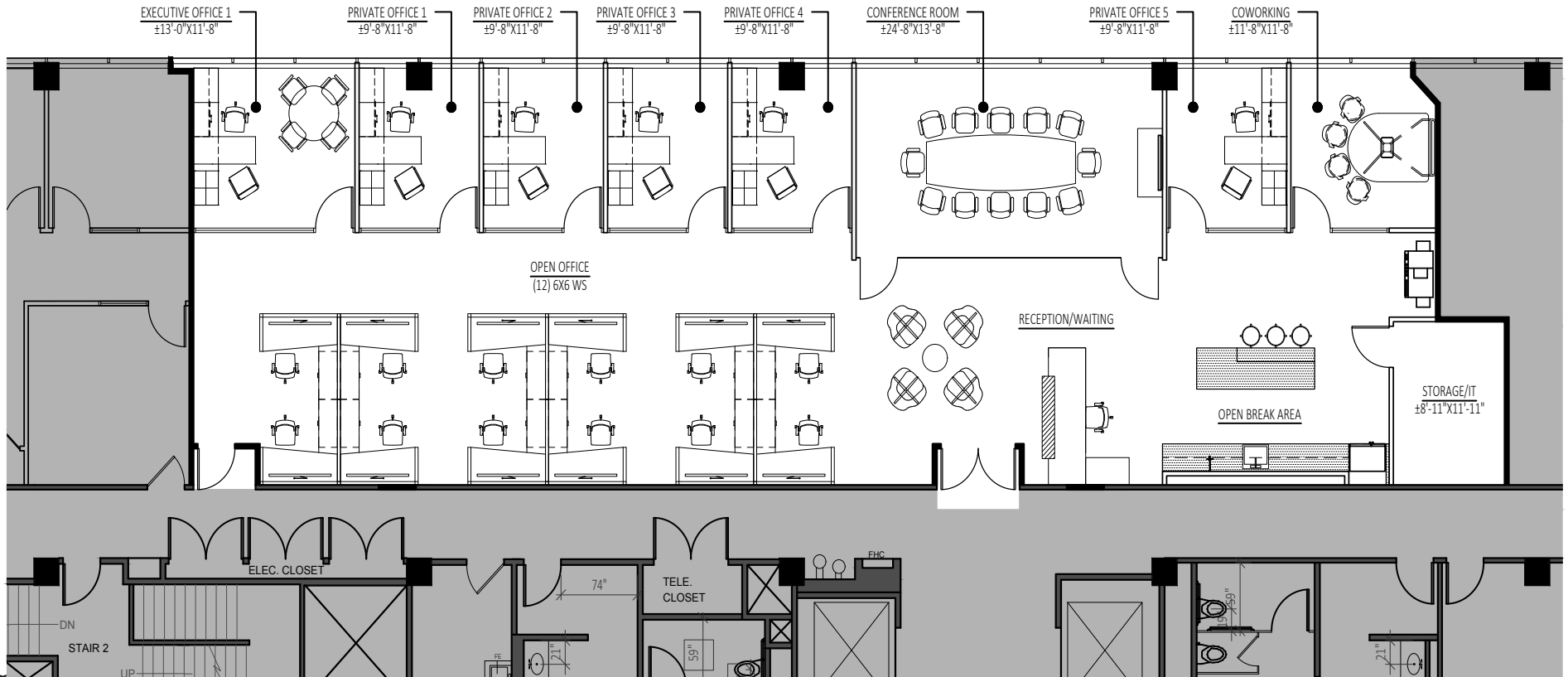


Fourth Floor

Suite 450 - **3,989 SF** Hypothetical test fit



1640SEPULVEDA.COM

JACLYN WARD
Managing Director
+1 310 595 3618
jaclyn.ward@jll.com
Lic. #01912455

BRIAN NIEHAU
Managing Director
+1 310 595 3824
brian.niehaus@jll.com
Lic. #01836528

CASSIE TROSCLAIR
Executive Vice President
+1 310 595 3613
cassie.trosclair@jll.com
Lic. #02021435