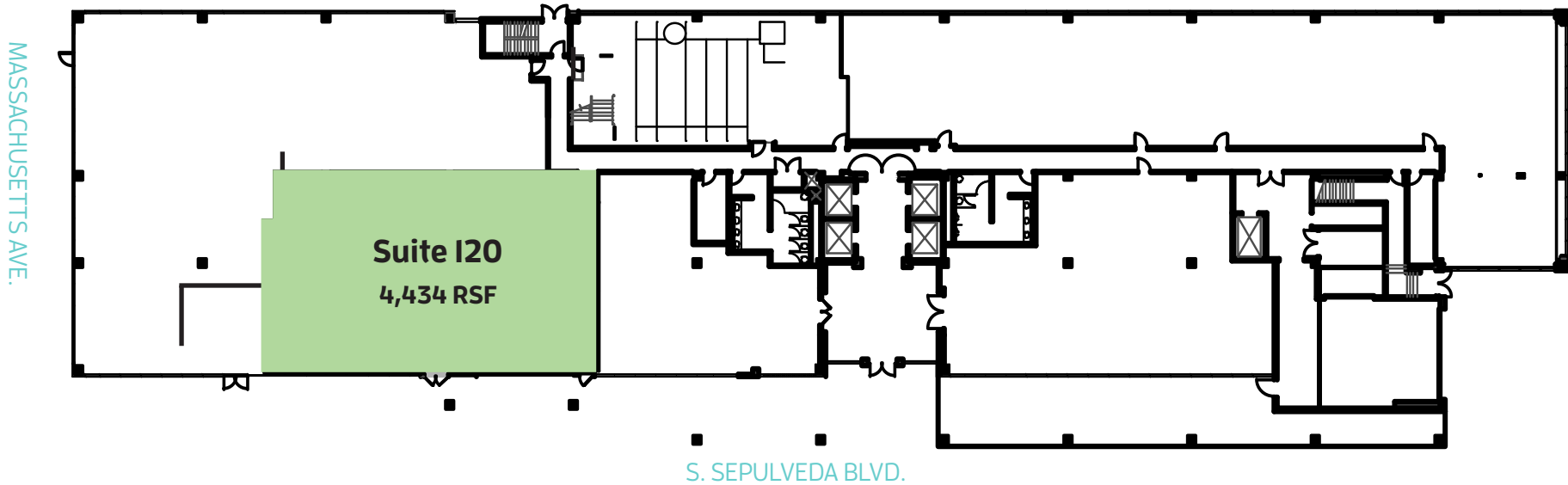


First Floor

4,434 SF available



1640SEPULVEDA.COM

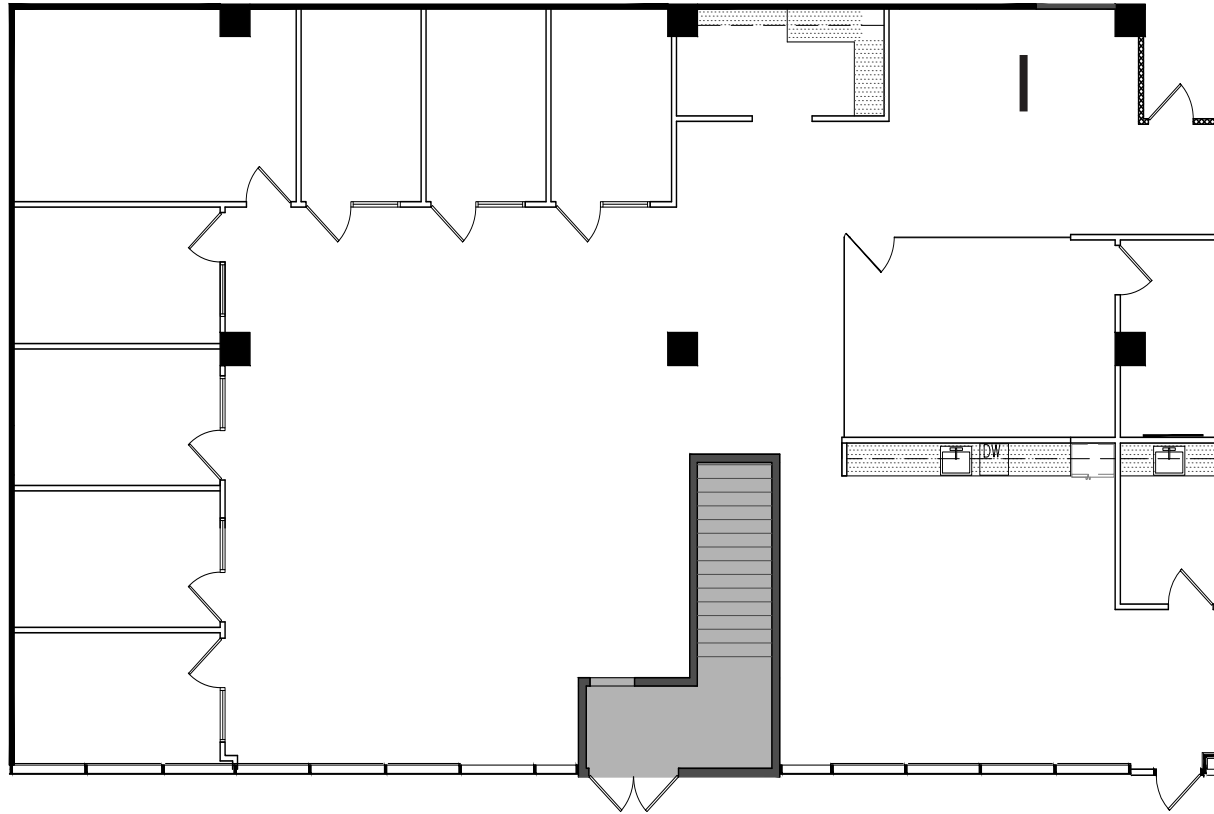
JACLYN WARD
Managing Director
+1 310 595 3618
jaclyn.ward@jll.com
Lic. #01912455

BRIAN NIEHAUS
Managing Director
+1 310 595 3824
brian.niehaus@jll.com
Lic. #01836528

CASSIE TROSCLAIR
Executive Vice President
+1 310 595 3613
cassie.trosclair@jll.com
Lic. #02021435

First Floor

Suite I20 - **4,434 SF** available now
Sepulveda-frontage, above-standard ceiling height



1640SEPULVEDA.COM

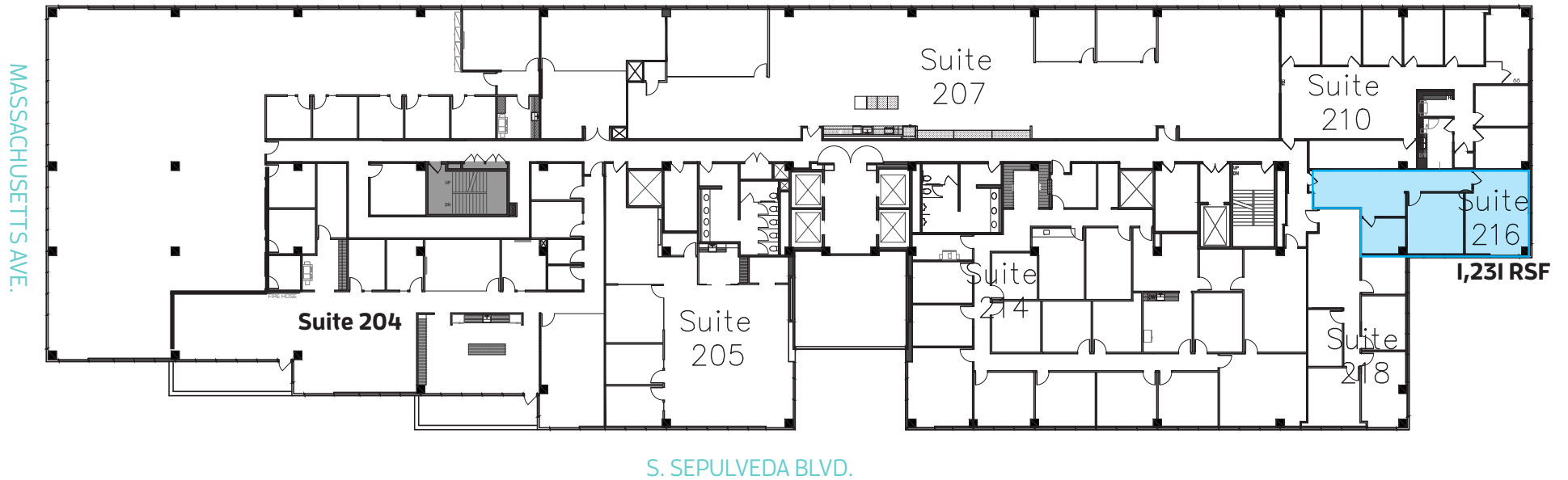
JACLYN WARD
Managing Director
+1 310 595 3618
jaclyn.ward@jll.com
Lic. #01912455

BRIAN NIEHAUS
Managing Director
+1 310 595 3824
brian.niehaus@jll.com
Lic. #01836528

CASSIE TROSCLAIR
Executive Vice President
+1 310 595 3613
cassie.trosclair@jll.com
Lic. #02021435

Second Floor

1,231 SF available



1640SEPULVEDA.COM

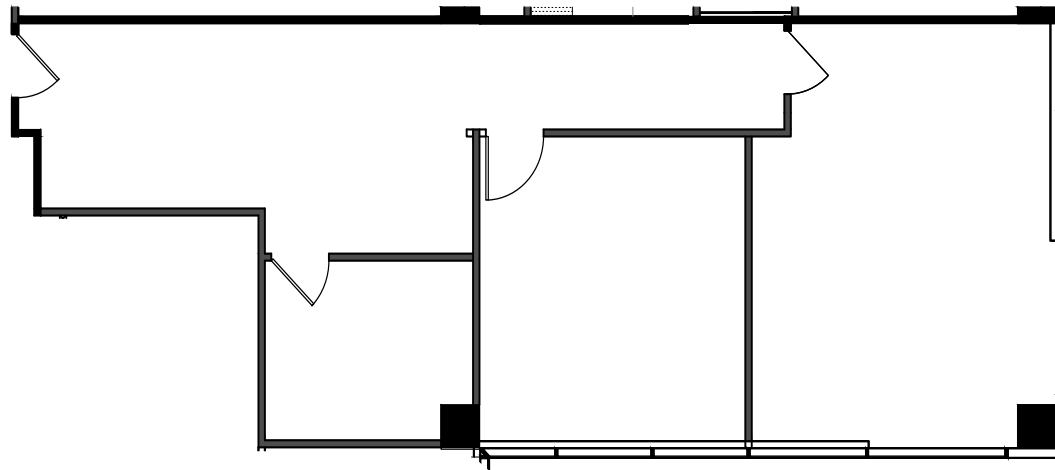
JACLYN WARD
Managing Director
+1 310 595 3618
jaclyn.ward@jll.com
Lic. #01912455

BRIAN NIEHAUS
Managing Director
+1 310 595 3824
brian.niehaus@jll.com
Lic. #01836528

CASSIE TROSCLAIR
Executive Vice President
+1 310 595 3613
cassie.trosclair@jll.com
Lic. #02021435

Second Floor

Suite 216 - **1,231 SF** available now



1640SEPULVEDA.COM

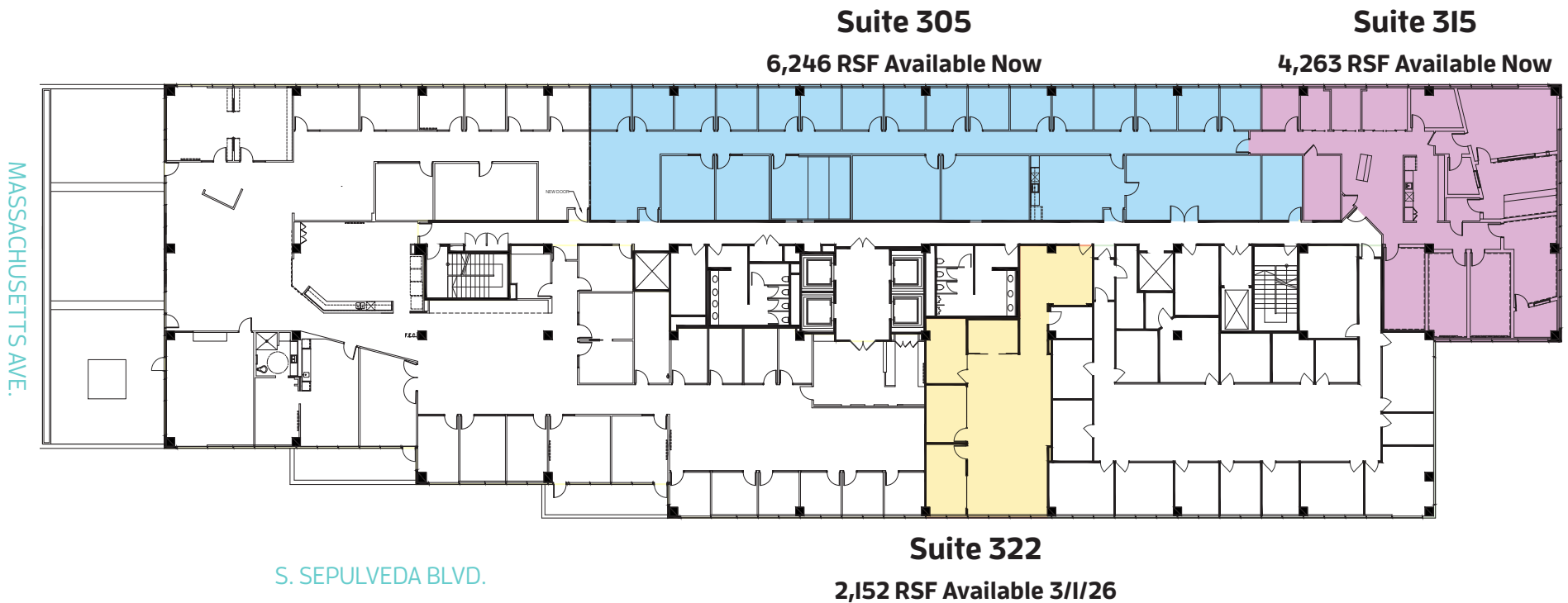
JACLYN WARD
Managing Director
+1 310 595 3618
jaclyn.ward@jll.com
Lic. #01912455

BRIAN NIEHAUS
Managing Director
+1 310 595 3824
brian.niehaus@jll.com
Lic. #01836528

CASSIE TROSCLAIR
Executive Vice President
+1 310 595 3613
cassie.trosclair@jll.com
Lic. #02021435

Third Floor

Up to 12,661 SF available



1640SEPULVEDA.COM

JACLYN WARD
Managing Director
+1 310 595 3618
jaclyn.ward@jll.com
Lic. #01912455

BRIAN NIEHAUS
Managing Director
+1 310 595 3824
brian.niehaus@jll.com
Lic. #01836528

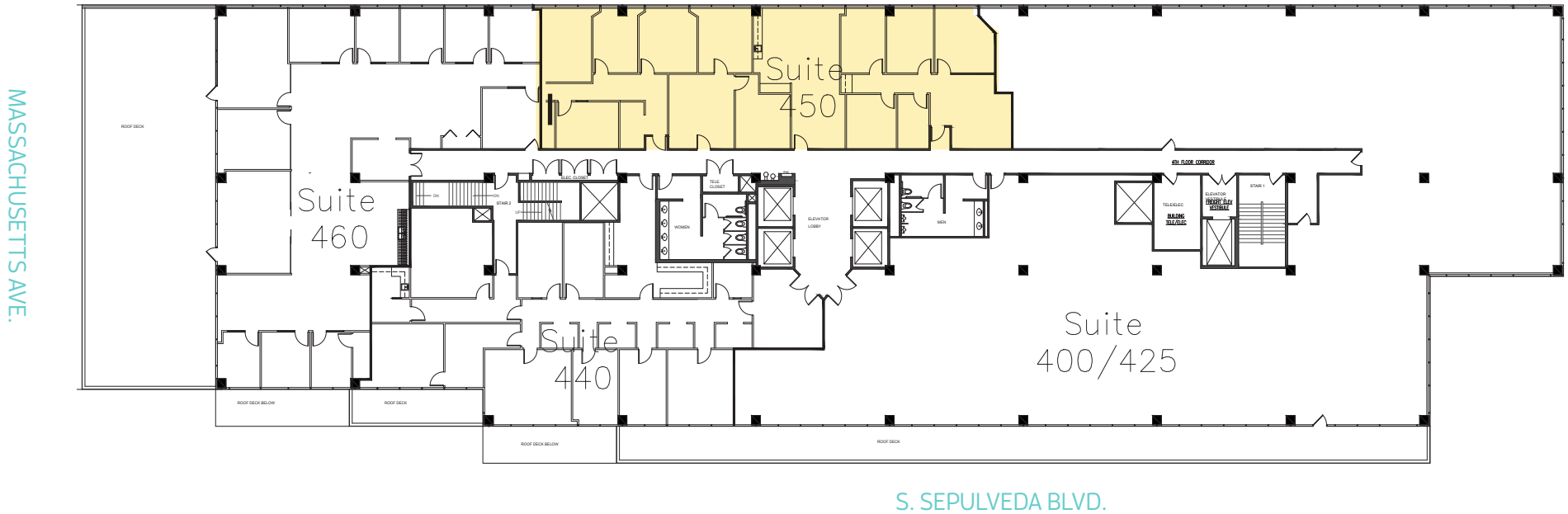
CASSIE TROSCLAIR
Executive Vice President
+1 310 595 3613
cassie.trosclair@jll.com
Lic. #02021435

Fourth Floor

3,989 SF available

Suite 450

3,989 RSF; Available Now



1640SEPULVEDA.COM

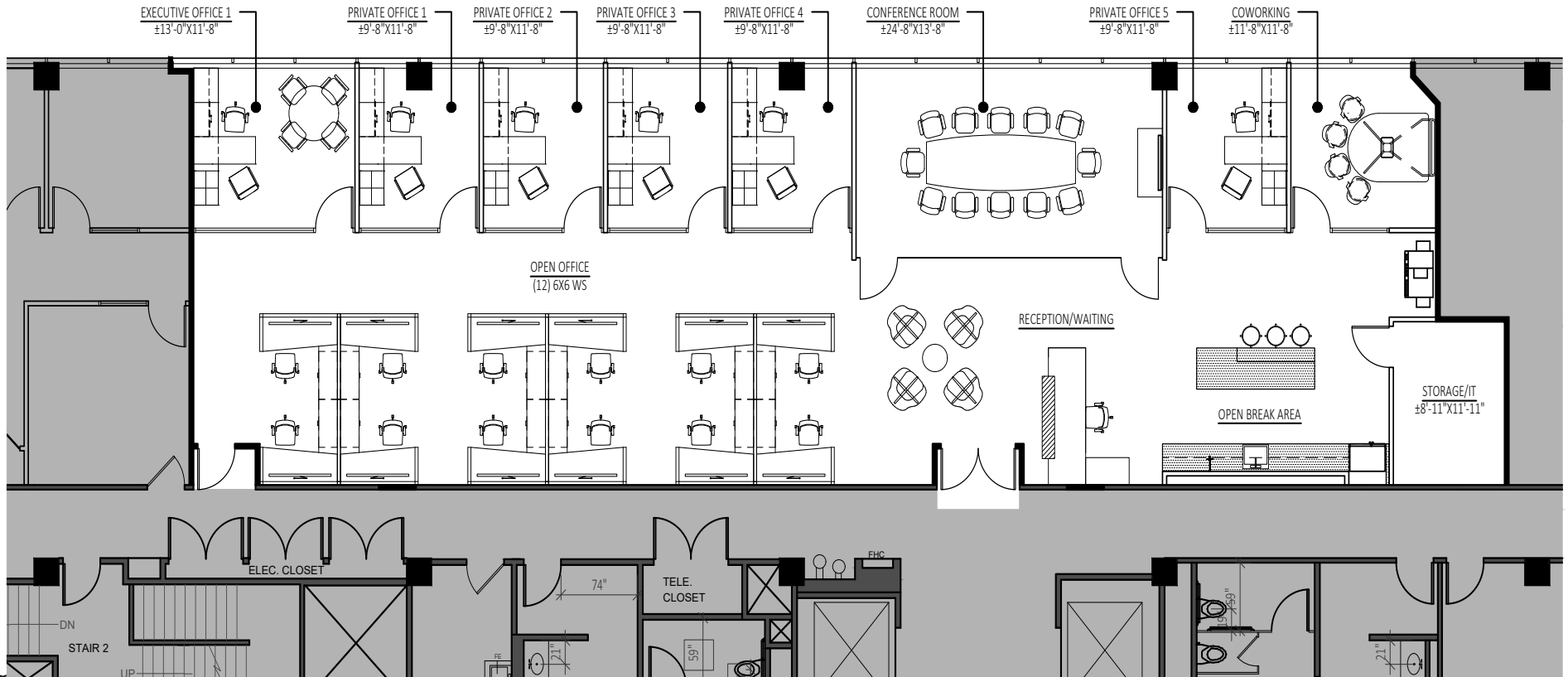
JACLYN WARD
Managing Director
+1 310 595 3618
jaclyn.ward@jll.com
Lic. #01912455

BRIAN NIEHAUS
Managing Director
+1 310 595 3824
brian.niehaus@jll.com
Lic. #01836528

CASSIE TROSCLAIR
Executive Vice President
+1 310 595 3613
cassie.trosclair@jll.com
Lic. #02021435

Fourth Floor

Suite 450 - **3,989 SF** Hypothetical test fit



1640SEPULVEDA.COM

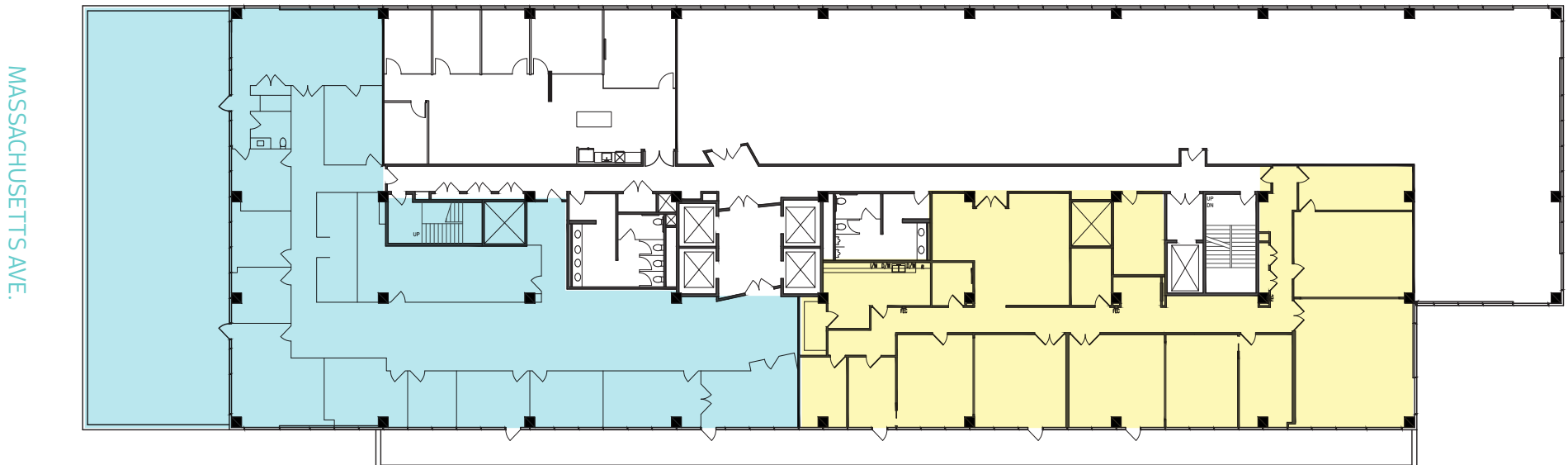
JACLYN WARD
Managing Director
+1 310 595 3618
jaclyn.ward@jll.com
Lic. #01912455

BRIAN NIEHAUS
Managing Director
+1 310 595 3824
brian.niehaus@jll.com
Lic. #01836528

CASSIE TROSCLAIR
Executive Vice President
+1 310 595 3613
cassie.trosclair@jll.com
Lic. #02021435

Fifth Floor

Up to 13,037 SF available



Suite 520

6,663 RSF; Available 7/1/25

Includes 3,500 SF private terrace

S. SEPULVEDA BLVD.

Suite 500

6,374 RSF; Available Now



1640SEPULVEDA.COM

JACLYN WARD
Managing Director
+1 310 595 3618
jaclyn.ward@jll.com
Lic. #01912455

BRIAN NIEHAUS
Managing Director
+1 310 595 3824
brian.niehaus@jll.com
Lic. #01836528

CASSIE TROSCLAIR
Executive Vice President
+1 310 595 3613
cassie.trosclair@jll.com
Lic. #02021435

