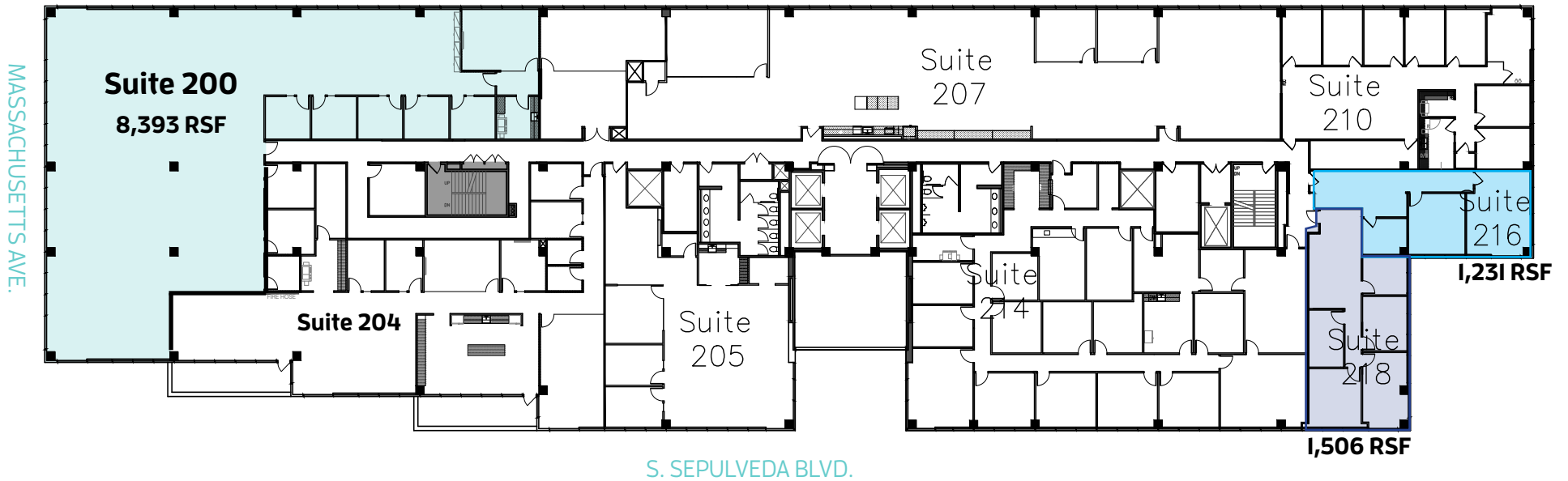


Second Floor

Up to 11,130 SF available

*Suite 200 Spec plan on following page



1640SEPULVEDA.COM

JACLYN WARD
Managing Director
+1 310 595 3618
jaclyn.ward@am.jll.com
Lic. #01912455

BRIAN NIEHAUS
Managing Director
+1 310 595 3824
brian.niehaus@am.jll.com
Lic. #01836528

CASSIE TROSCLAIR
Vice President
+1 310 595 3613
cassie.trosclair@am.jll.com
Lic. #02021435

Second Floor

Suite 200 - **8,393 SF**

Spec Suite delivering November 15, 2022



1640SEPULVEDA.COM

JACLYN WARD
Managing Director
+1 310 595 3618
jaclyn.ward@am.jll.com
Lic. #01912455

BRIAN NIEHAUS
Managing Director
+1 310 595 3824
brian.niehaus@am.jll.com
Lic. #01836528

CASSIE TROSCLAIR
Vice President
+1 310 595 3613
cassie.trosclair@am.jll.com
Lic. #02021435