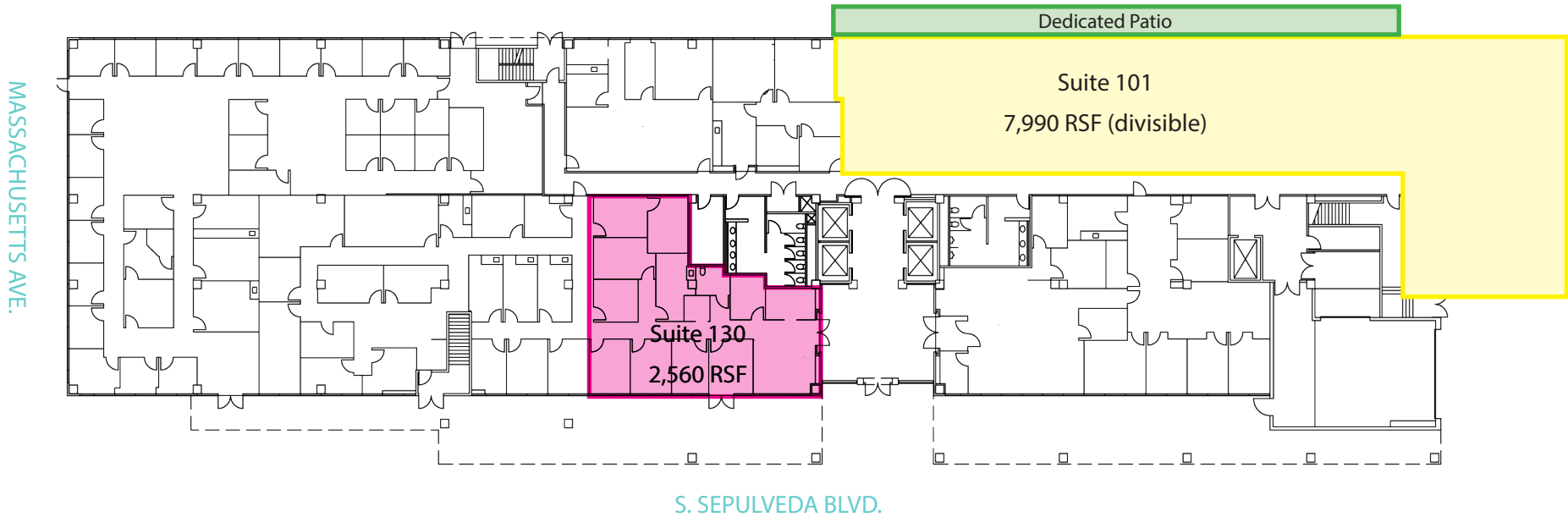


First Floor

Up to 10,550 SF available

Featuring 18' ceilings



1640SEPULVEDA.COM

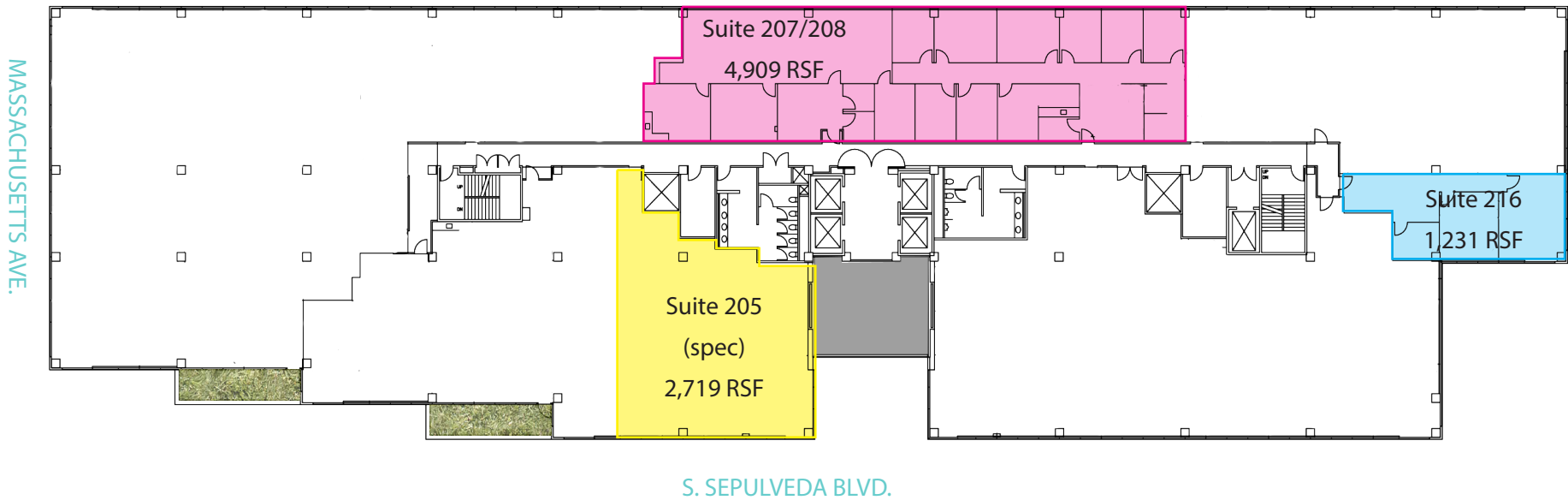
JACLYN WARD
Executive Vice President
+1 310 595 3618
jaclyn.ward@am.jll.com
Lic. #01912455

BRIAN NIEHAUS
Managing Director
+1 310 595 3824
brian.niehaus@am.jll.com
Lic. #01836528

CASSIE TROSCLAIR
Associate
+1 310 595 3613
cassie.trosclair@am.jll.com
Lic. #02021435

Second Floor

Up to 8,859 SF available



1640SEPULVEDA.COM

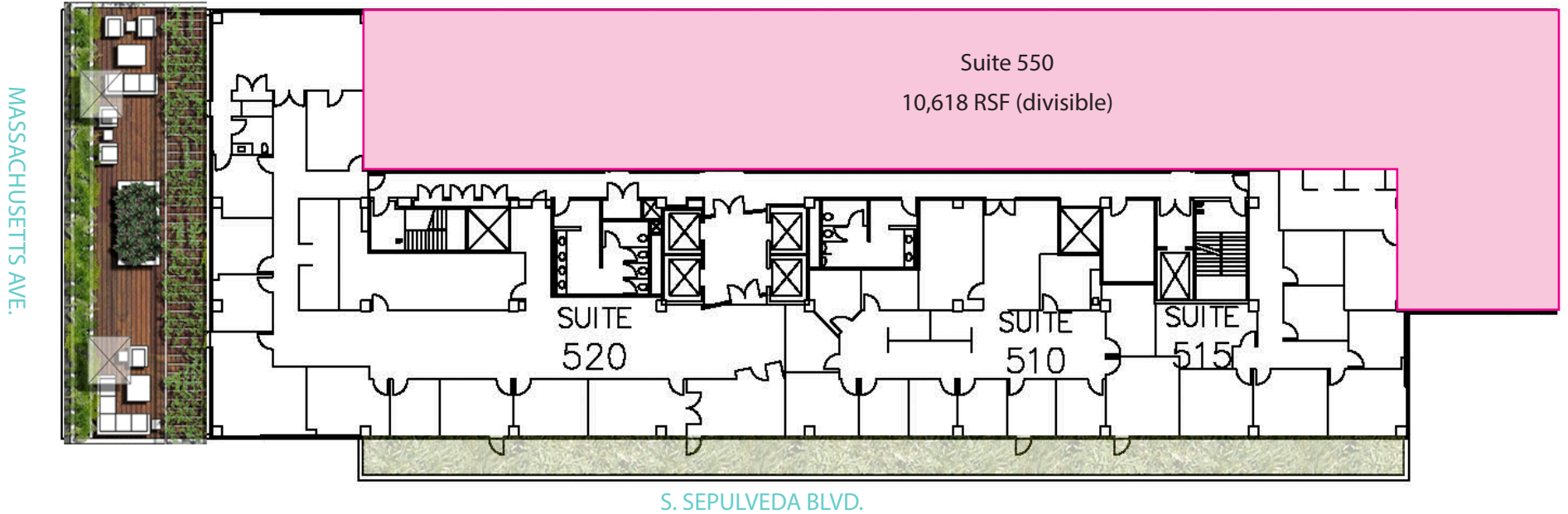
JACLYN WARD
Executive Vice President
+1 310 595 3618
jaclyn.ward@am.jll.com
Lic. #01912455

BRIAN NIEHAUS
Managing Director
+1 310 595 3824
brian.niehaus@am.jll.com
Lic. #01836528

CASSIE TROSCLAIR
Associate
+1 310 595 3613
cassie.trosclair@am.jll.com
Lic. #02021435

Fifth Floor

10,618 RSF (divisible)



1640SEPULVEDA.COM

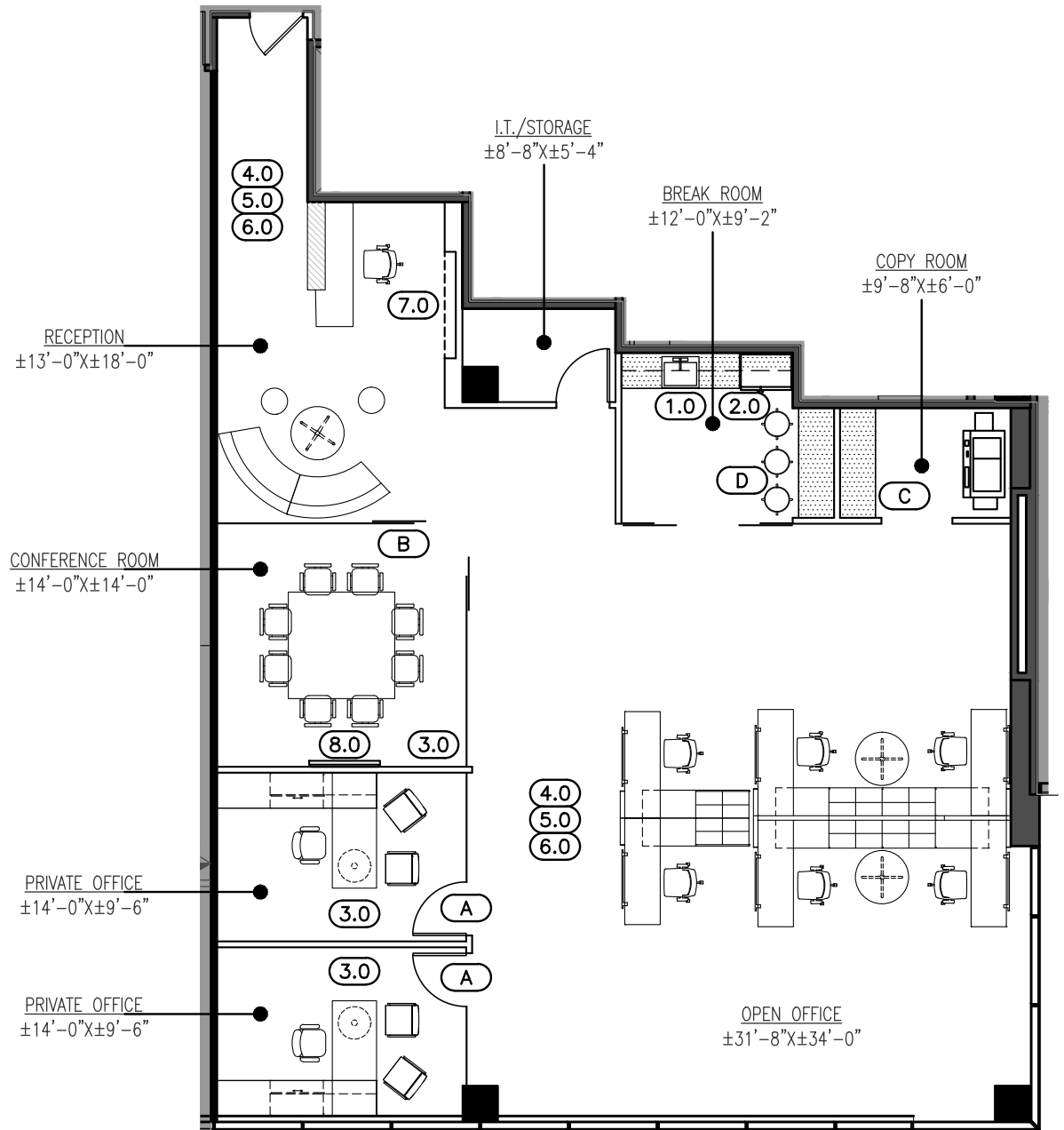
JACLYN WARD
Executive Vice President
+1 310 595 3618
jaclyn.ward@am.jll.com
Lic. #01912455

BRIAN NIEHAUS
Managing Director
+1 310 595 3824
brian.niehaus@am.jll.com
Lic. #01836528

CASSIE TROSCLAIR
Associate
+1 310 595 3613
cassie.trosclair@am.jll.com
Lic. #02021435

2nd Floor

Spec Suite 205 - 2,719 SF



1640SEPULVEDA.COM

JACLYN WARD
 Executive Vice President
 +1 310 595 3618
 jaclyn.ward@am.jll.com
 Lic. #01912455

BRIAN NIEHAUS
 Managing Director
 +1 310 595 3824
 brian.niehaus@am.jll.com
 Lic. #01836528

CASSIE TROSCLAIR
 Associate
 +1 310 595 3613
 cassie.troscclair@am.jll.com
 Lic. #02021435