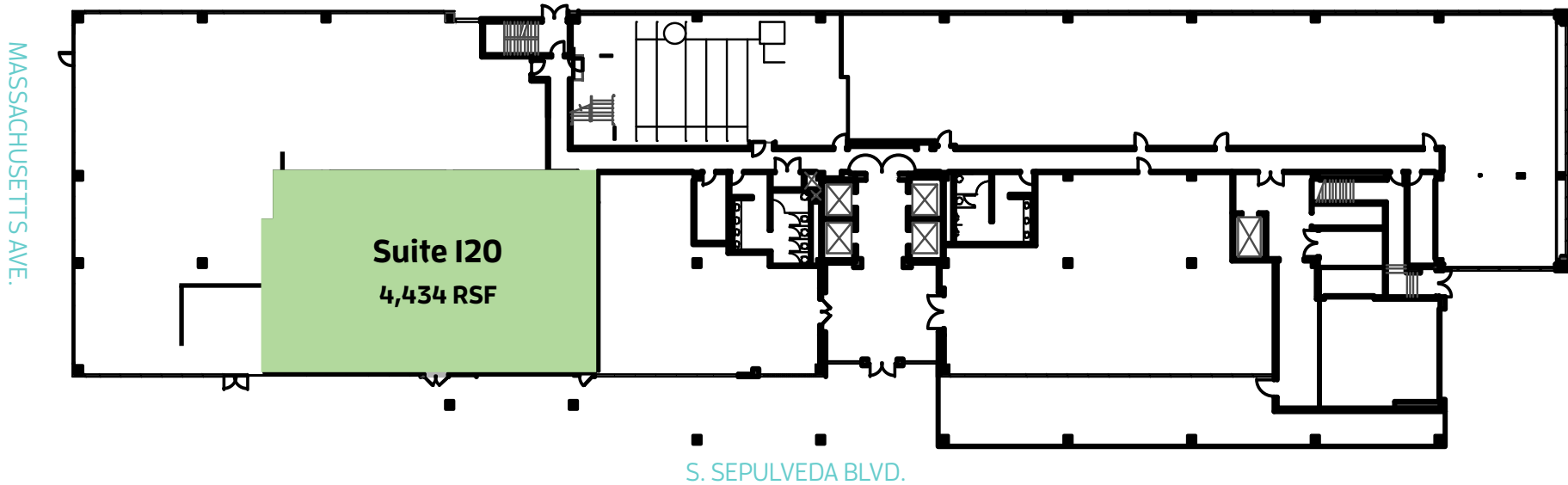


First Floor

4,434 SF available 1/1/24



1640SEPULVEDA.COM

JACLYN WARD
Managing Director
+1 310 595 3618
jaclyn.ward@jll.com
Lic. #01912455

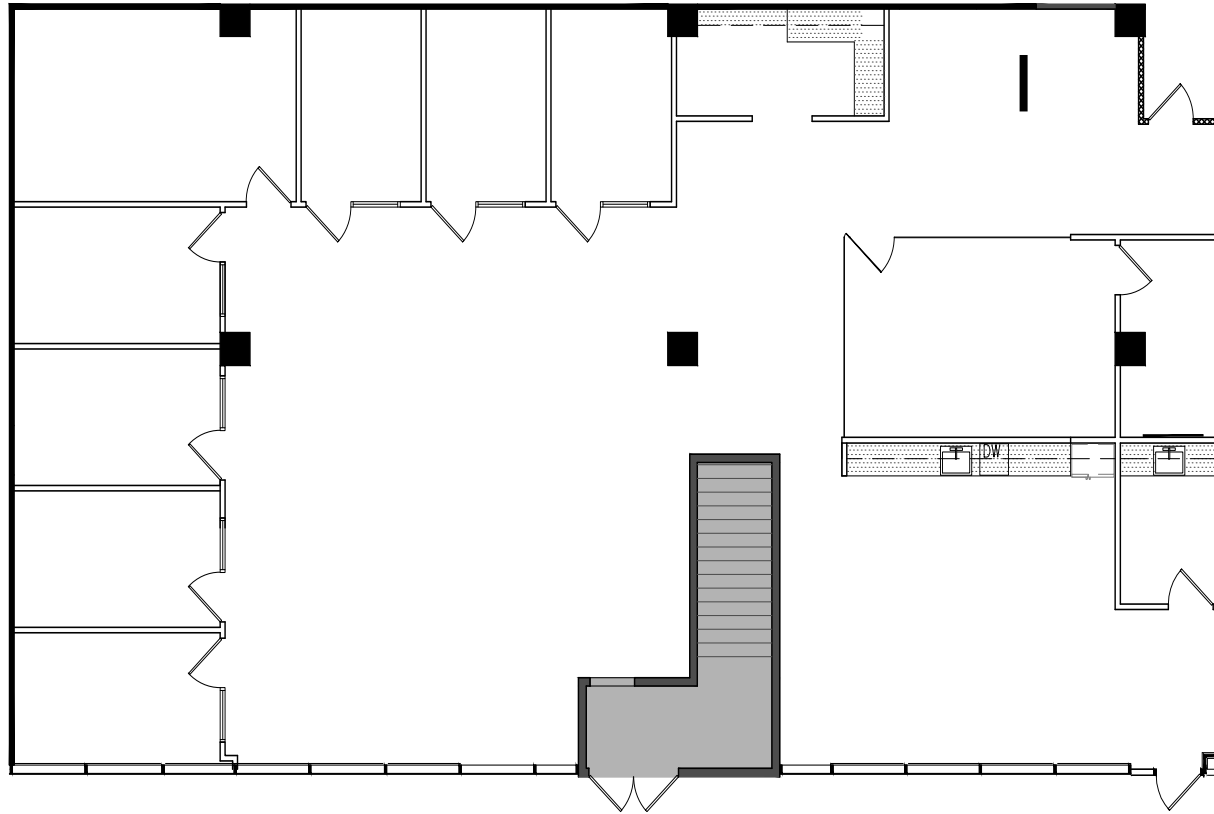
BRIAN NIEHAUS
Managing Director
+1 310 595 3824
brian.niehaus@jll.com
Lic. #01836528

CASSIE TROSCLAIR
Vice President
+1 310 595 3613
cassie.trosclair@jll.com
Lic. #02021435

First Floor

Suite I20 - **4,434 SF** available 1/1/24

Sepulveda-frontage, above-standard ceiling height



1640SEPULVEDA.COM

JACLYN WARD
Managing Director
+1 310 595 3618
jaclyn.ward@jll.com
Lic. #01912455

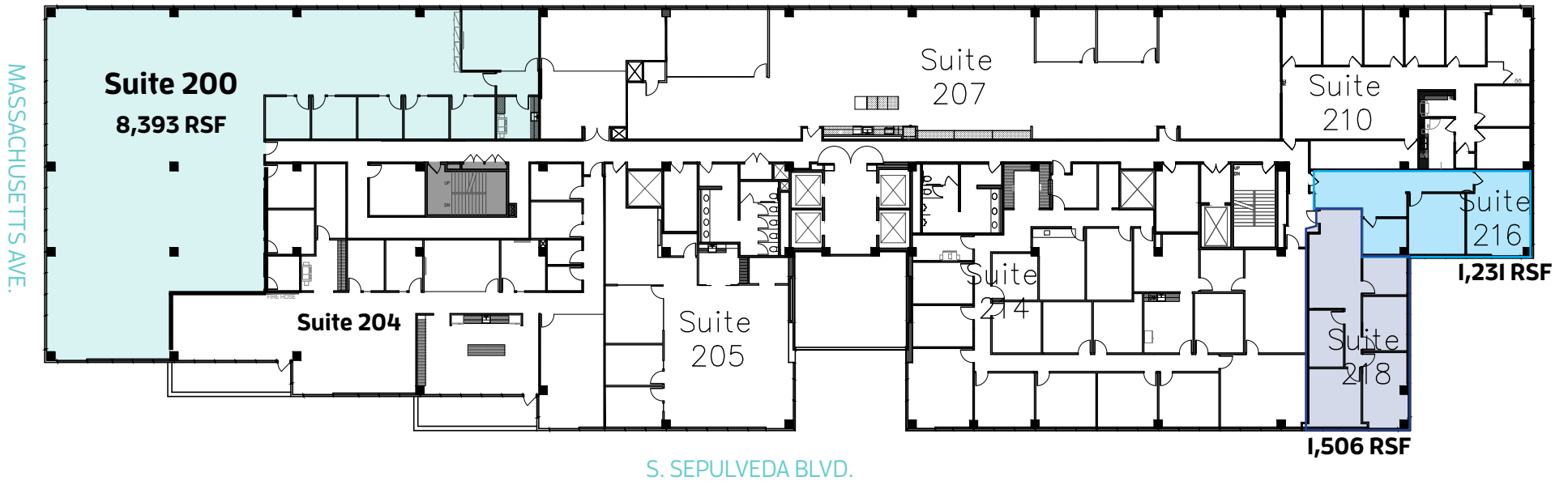
BRIAN NIEHAUS
Managing Director
+1 310 595 3824
brian.niehaus@jll.com
Lic. #01836528

CASSIE TROSCLAIR
Vice President
+1 310 595 3613
cassie.trosclair@jll.com
Lic. #02021435

Second Floor

Up to 11,130 SF available

*Suite 200 Spec plan on following page



1640SEPULVEDA.COM

JACLYN WARD
Managing Director
+1 310 595 3618
jaclyn.ward@jll.com
Lic. #01912455

BRIAN NIEHAUS
Managing Director
+1 310 595 3824
brian.niehaus@jll.com
Lic. #01836528

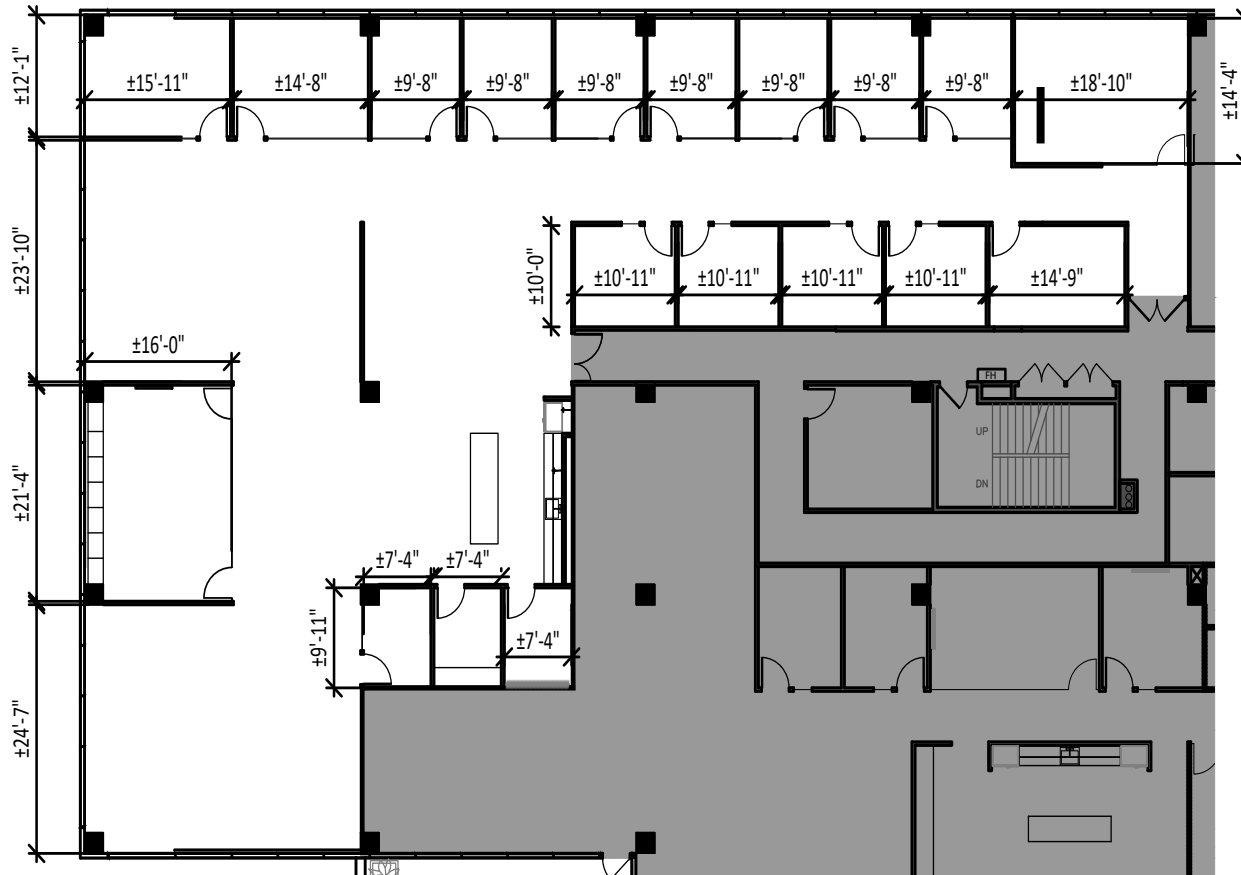
CASSIE TROSCLAIR
Vice President
+1 310 595 3613
cassie.trosclair@jll.com
Lic. #02021435

Second Floor

Suite 200 - **8,393 SF**

New Spec Suite now available

VIRTUAL TOUR



1640SEPULVEDA.COM

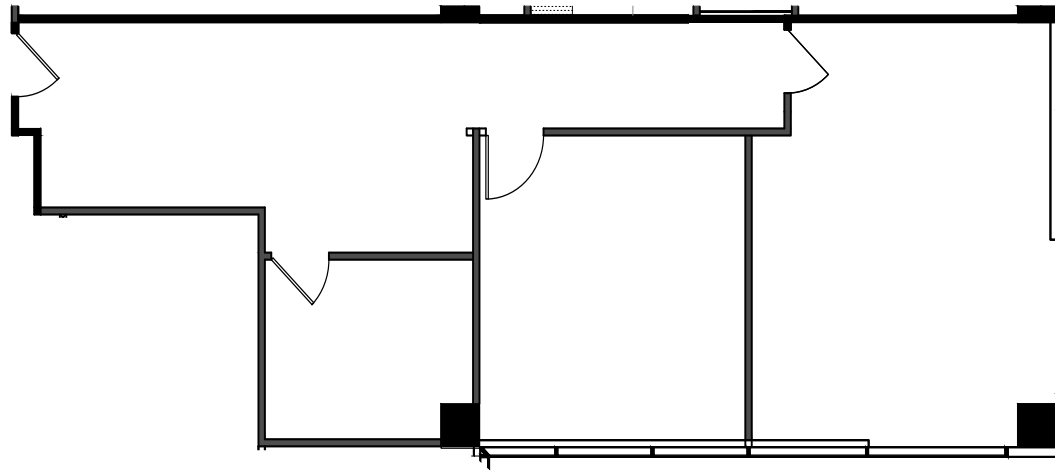
JACLYN WARD
Managing Director
+1 310 595 3618
jaclyn.ward@jll.com
Lic. #01912455

BRIAN NIEHAUS
Managing Director
+1 310 595 3824
brian.niehaus@jll.com
Lic. #01836528

CASSIE TROSCLAIR
Vice President
+1 310 595 3613
cassie.troscclair@jll.com
Lic. #02021435

Second Floor

Suite 216 - **1,231 SF**



1640SEPULVEDA.COM

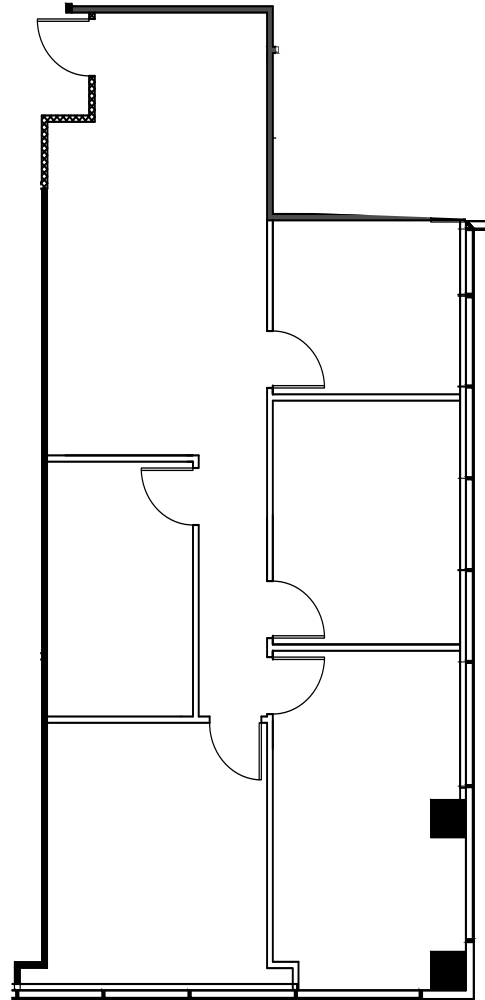
JACLYN WARD
Managing Director
+1 310 595 3618
jaclyn.ward@jll.com
Lic. #01912455

BRIAN NIEHAUS
Managing Director
+1 310 595 3824
brian.niehaus@jll.com
Lic. #01836528

CASSIE TROSCLAIR
Vice President
+1 310 595 3613
cassie.trosclair@jll.com
Lic. #02021435

Second Floor

Suite 218 - **1,506 SF**



1640SEPULVEDA.COM

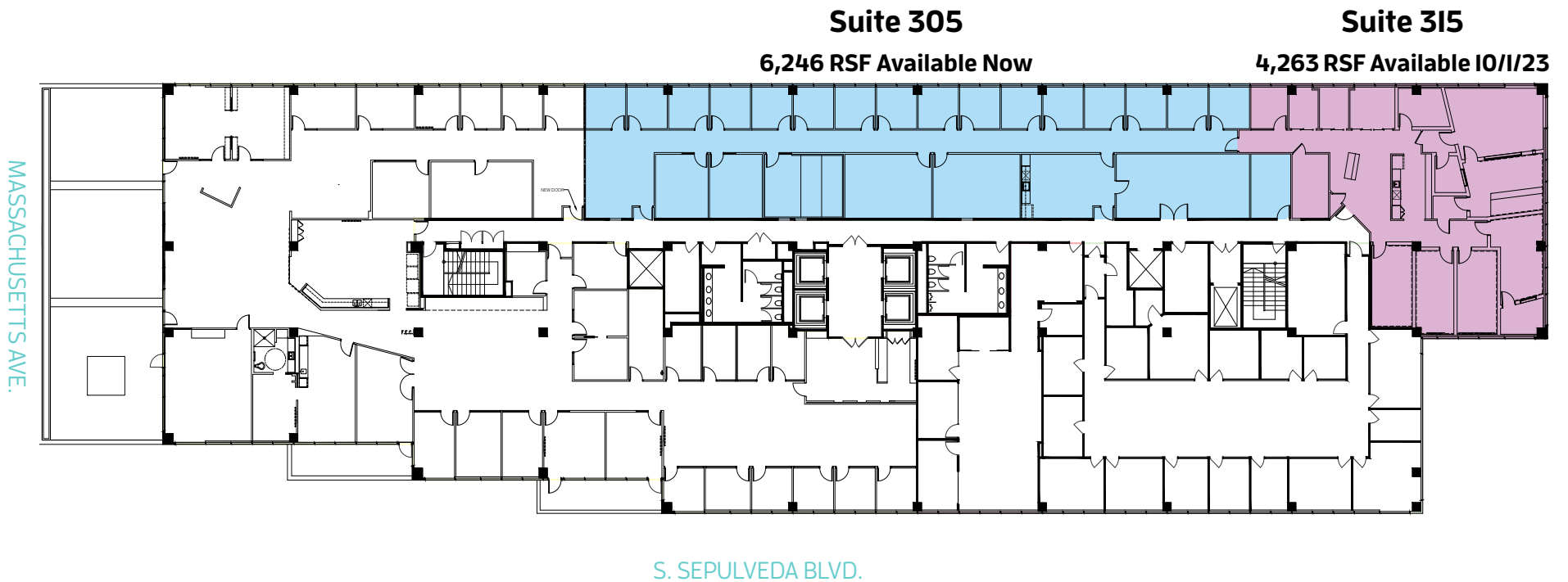
JACLYN WARD
Managing Director
+1 310 595 3618
jaclyn.ward@jll.com
Lic. #01912455

BRIAN NIEHAUS
Managing Director
+1 310 595 3824
brian.niehaus@jll.com
Lic. #01836528

CASSIE TROSCLAIR
Vice President
+1 310 595 3613
cassie.trosclair@jll.com
Lic. #02021435

Third Floor

Up to 10,509 SF available



1640SEPULVEDA.COM

JACLYN WARD
Managing Director
+1 310 595 3618
jaclyn.ward@jll.com
Lic. #01912455

BRIAN NIEHAUS
Managing Director
+1 310 595 3824
brian.niehaus@jll.com
Lic. #01836528

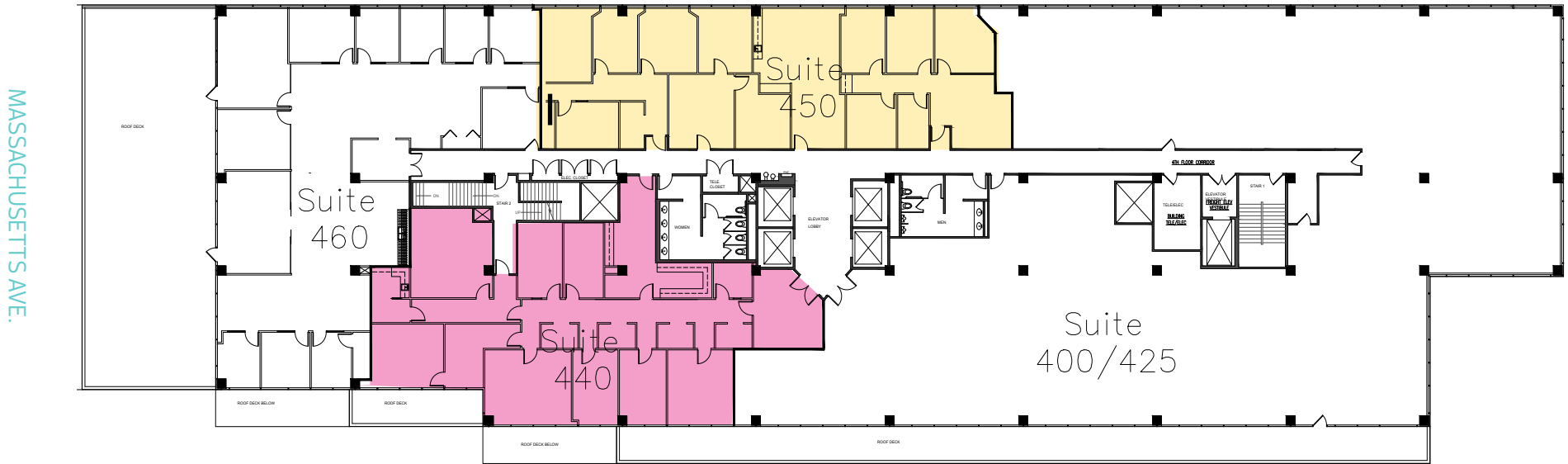
CASSIE TROSCLAIR
Vice President
+1 310 595 3613
cassie.trosclair@jll.com
Lic. #02021435

Fourth Floor

Up to 8,823 SF available

Suite 450

3,989 RSF; Available Dec 2023



Suite 440

4,834 RSF

S. SEPULVEDA BLVD.



1640SEPULVEDA.COM

JACLYN WARD
Managing Director
+1 310 595 3618
jaclyn.ward@jll.com
Lic. #01912455

BRIAN NIEHAUS
Managing Director
+1 310 595 3824
brian.niehaus@jll.com
Lic. #01836528

CASSIE TROSCLAIR
Vice President
+1 310 595 3613
cassie.trosclair@jll.com
Lic. #02021435